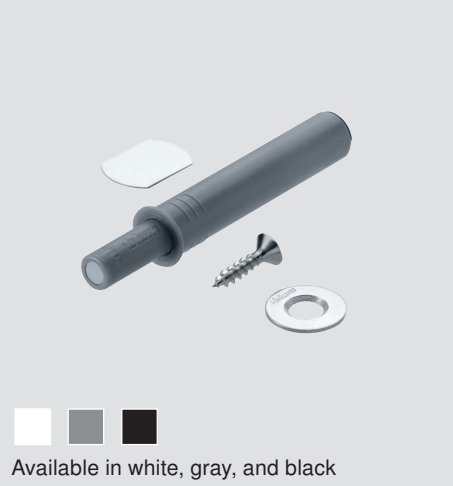


Hinges

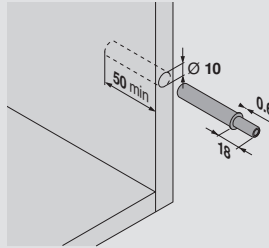


TIP-ON for doors

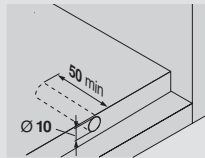
TIP-ON set for standard door



Overlay



Inset



- Nylon unit with magnet tip
- Adjustment range +4 mm to -1 mm
- For use with Blum Euro free swing hinges
- For door heights less than 48"
- Works for overlay and inset applications
- Can be bored into the panel or used with an adapter plate

Set includes:

- TIP-ON unit
- Self-adhesive catch plate
- Screw-on catch plate
- Wood screw

Part no.

NOTE: Due to various door weights and sizes, trial application recommended

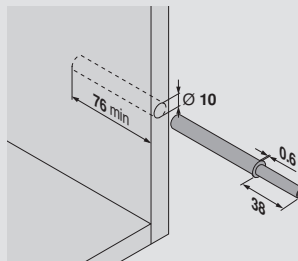
Standard door set

956.1004

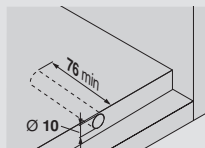
TIP-ON set for large door



Overlay



Inset



- Nylon unit with magnet tip
- Adjustment range +4 mm to -1 mm
- For use with Blum Euro free swing hinges
- For door heights greater than 48"
- Works for overlay and inset applications
- Can be bored into the panel or used with an adapter plate

Set includes:

- TIP-ON unit
- Self-adhesive catch plate
- Screw-on catch plate
- Wood screw

Part no.

NOTE: Due to various door weights and sizes, trial application recommended

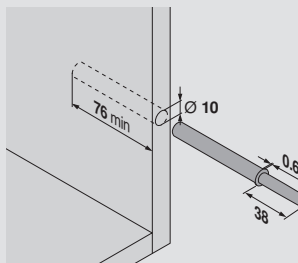
Large door set

956A1004

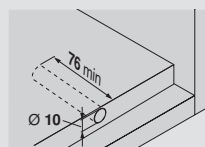
TIP-ON unit for self/soft close hinges



Overlay



Inset



- Nylon unit with bumper tip
- Adjustment range +4 mm to -1 mm
- For use with Blum self/soft close hinges
- For door widths greater than 10"
- Works for overlay and inset applications
- Can be bored into the panel or used with an adapter plate

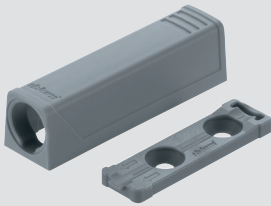
Part no.

NOTE: Due to various door weights and sizes, trial application recommended

Self/soft close hinges

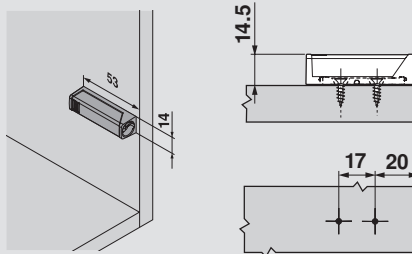
956A1006

TIP-ON in-line adapter plate for standard door



Available in white, gray, black, and nickel

NOTE: For face frame applications, blocking out may be required

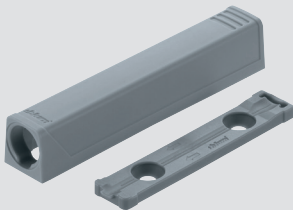


Application	Setback
Overlay	20
Inset	22 + door thickness

- In-line adapter plate for standard door
- Two-piece, screw-on base plate
- 20 mm setback, 17 mm apart
- Door gap factory setting 2 mm
- Nylon

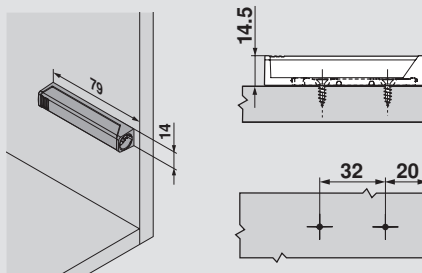
	Part no.
Screw-on in-line adapter	956.1201
Installation screw	606N or 606P

TIP-ON in-line adapter plate for large door



Available in white, gray, black, and nickel

NOTE: For face frame applications, blocking out may be required



Application	Setback
Overlay	20
Inset	22 + door thickness

- In-line adapter plate for large door
- Two-piece, screw-on base plate
- 20 mm setback, 32 mm apart
- Door gap factory setting 2 mm
- Nylon

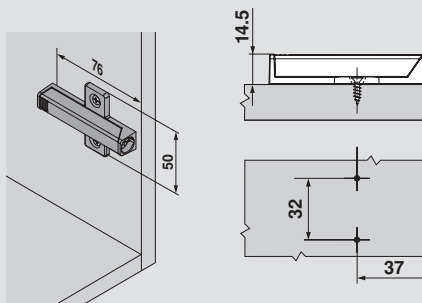
	Part no.
Screw-on in-line adapter	956A1201
Installation screw	606N or 606P

TIP-ON wing adapter plate for large door



Available in gray only

NOTE: For face frame applications, blocking out may be required



Application	Setback
Overlay	37
Inset	39 + door thickness

- Wing adapter plate for large door
- One-piece, screw-on wing plate
- 37 mm setback, 32 mm apart
- Door gap factory setting 2 mm
- Gray nylon

	Part no.
Screw-on wing adapter	956A1501
Installation screw	606N or 606P

TIP-ON for doors